



LAMBERET

REFRIGERATED ISOTHERMAL BODIES FOR FIAT
UTILITY VEHICLES

Doblo
VAN

*Above- or sub-zero cold
side-door compatible*

*Pallet-stackable
between single wheel wells*

*Safety & comfort
original cab bulkhead*

 **N° Vert 0 800 308 530**

APPEL GRATUIT DEPUIS UN POSTE FIXE EN FRANCE



LAMBERET
Le maillon fort de la chaîne du froid

www.lamberet.com

Doblo VAN



This body is intended to transport goods at controlled temperatures, in accordance with current ATP regulations.



BASIC VEHICLE FOR CONVERSION

CH1 plate Doblo van (short, 2755mm wheelbase, low roof)

With right side door, plated swinging rear doors, complete cab bulkhead.

3-seat version: Compatible, ask when ordering.

Original hitch compatible (if installed before conversion).

Incompatible without right side door.

If refrigeration unit:

no Stop&Start, or can be disabled with "bodymaker outlet"

If electric refrigeration unit:

With or without A/C, with 'enhanced alternator + enhanced battery'

If direct-drive refrigeration unit:

1.3 Mjt 80 | 95: kit available without air conditioning.

1.6 Mjt 105 | 120: kit available with or without air conditioning.

1.4 CNG T-Jet 120: available with or without air conditioning.

Example data - Ask us first to verify compatibility, time needed, and the unit's size.

LAMBERET BODY & INSULATION

ATP-quality Heightened Insulation integrated cell formed of a sealed system of single-piece moulded composite panels, **designed and manufactured by Lamberet**. Polyurethane core with very high insulating power, hydrophobic treatment. Internal walls made of non-deforming polyester coated with antibacterial gel-coat.

Reinforcement of sides with sunken inserts, suitable for installing fixtures on. Payload and resistance optimized.

Reinforced anti-wear floor, made of smooth gray polyester forming a collector, with two channels into front drain.

Standard: LED light ceiling, dual joints on openings, interior emergency unlock, impact protections on thresholds and wheel wells, anti-splatter slanted threshold on side opening.

RCE-approved conversion, eligible for bodywork and veterinary certificates.

REFRIGERATION UNIT | CARRIER, KERSTNER, THERMOKING

Refrigeration unit classified as A/POSITIVE or C/NEGATIVE.

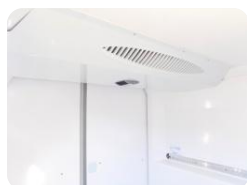
Power and technology (electric or direct-drive) customized depending on how used.

Recessed under aerodynamic cover above loading area for better soundproofing and aerodynamics.

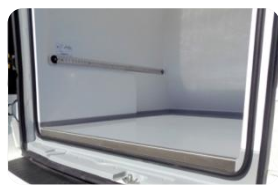
Unit options: Dual-mode highway/local, unit cover paint, heating mode, temperature recorder, door-activated switch, multi-temperature, Pharma certification, etc.

CONFIGURATIONS | CATERING, DISTRIBUTION, MEAT, SEAFOOD, MEDICAL, etc.

Corundum no-slip gel-coat or diamond-plate aluminium floor coating adjustable and liftable shelves, intermediate shelf with removable slatted racks, rear slanted threshold and additional drainage channels, baseboard runners, protective aluminium runners, securing rails, anti-loss curtains, advertising, etc.



Loading area with evaporator



Securing rails

Example dimensions (m) *

Overall length	4.40
Usable length low high	1.57 1.36
Max usable width	1.30
Width between wheel wells	1.12
Overall height (insulation Kerstner Carrier-TK)	1.84 1.96 1.99
Max usable height besides evaporator	1.02
Loading threshold height	0.63
Width Height rear doors	1.12 1.02
Width Height side doors	0.55 1.00
Mass (kg) besides options and unit	100
Usable volume (m³) Nb Eurobox 60X40X32	2.0 15

Short CH1 wh.b. 2755

4.40
1.57 1.36
1.30
1.12
1.84 1.96 1.99
1.02
0.63
1.12 1.02
0.55 1.00
100
2.0 15

* Data differs by version. Document not binding. Pictures may show optional features. As part of its continual improvement policy, LAMBERET reserves the right to modify the characteristics of conversions without prior notice. Photo credit: LAMBERET SAS - 042018



YouTube



f



in



www.lamberet.com

LAMBERET SAS | #1 in refrigerated utility and industrial vehicles in Europe.

129 route de Vonnas - BP 43 - 01380 Saint-Cyr/Menthon - France | +33 (0)3 85 30 85 30 | communication@lamberet.fr